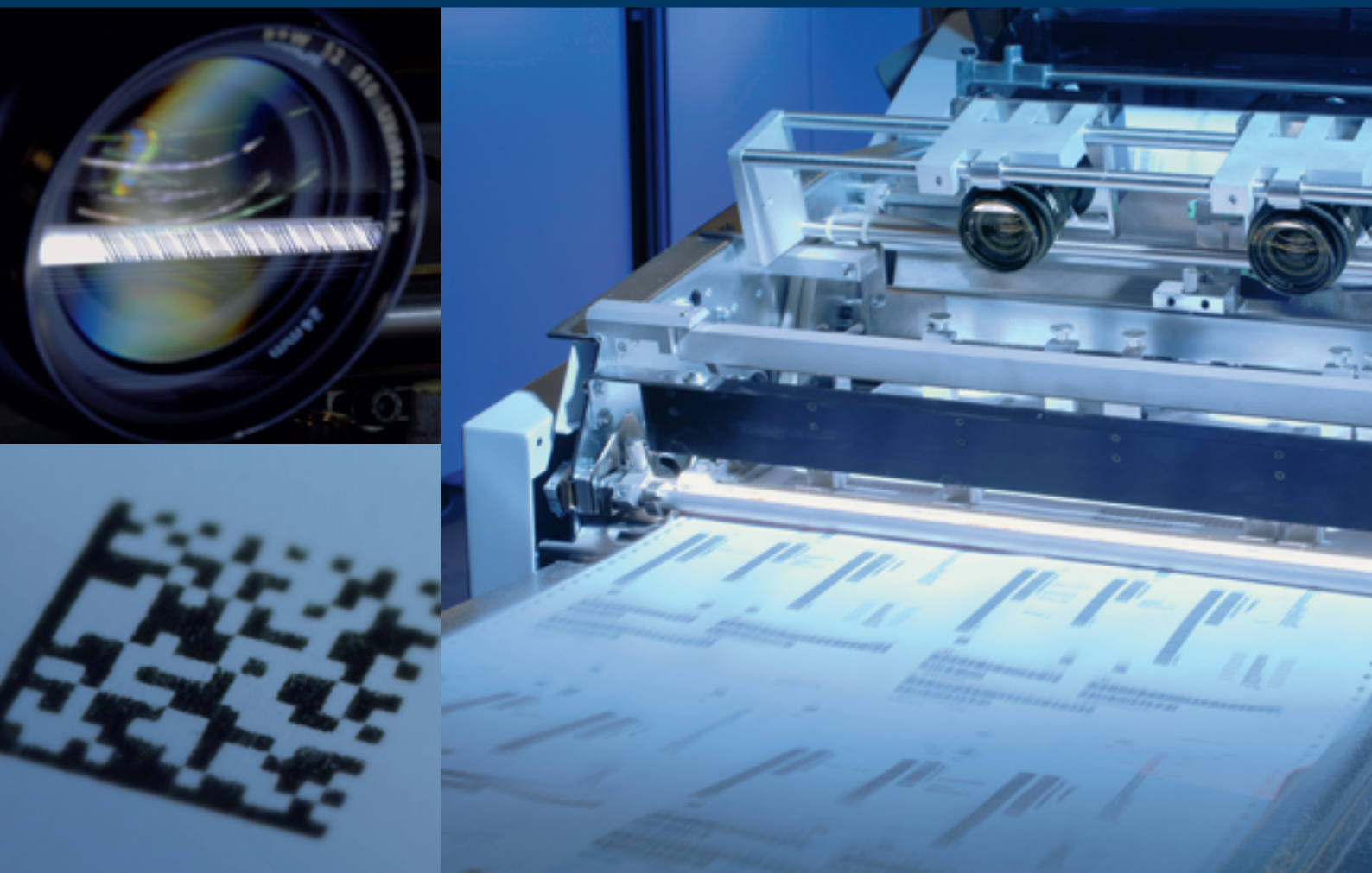


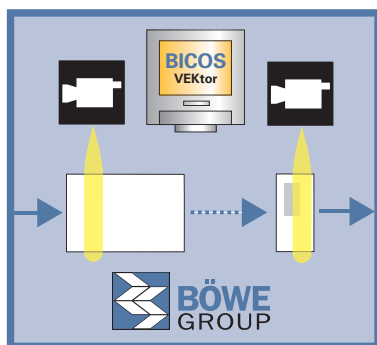
Integration. Security. Flexibility.

Due to both the increase in demand for productivity and quality, and more diverse applications in the modern mailroom, the requirements for intelligent reading technologies are also rising. The BÖWE Group consistently and comprehensively transforms these demands into groundbreaking reading technologies that are fully integrated in the inserting systems. The reading thus establishes a foundation for complete document identification and expanded quality monitoring in the handling process. This results in the best possible document processing security and the highest quality in the mailing process.



VEKtor camera reading

The VEKtor reading technology can be used with all BÖWE Group high-performance systems and has the ability to record and analyze all established codes (OMR, OCR, barcodes, data matrix, etc.) as well as images such as, for example, logos or addresses.



The camera reading is completely integrated both mechanically and electronically in the individual inserting system through the KOMPOS component control system and thereby also in the BICOS computer-assisted system operation and can be centrally operated through the

standard system monitor. The complete system can be programmed, operated, and controlled on just one monitor, which makes its operation even faster and easier.



The reading system can basically be integrated in the infeed components such as cutters or cut sheet feeders as well as at the end of the inserting process.

The VEKtor line scan camera scans the complete document and can read up to five freely definable scan areas (regions of interest or ROI) on one page, regardless of their alignment to one another. Adjustments can be made quickly, comfortably, and in a user-friendly manner on the monitor without having to change the position of the camera, which shortens the setup time considerably. Multiple codes and symbols of varying types can be read simultaneously.

Flexible use and transparency in the mailroom:

Document data is identified, and documents in the handling process are tracked and if necessary diverted depending on the positioning of the reading within the inserting process. With integration into the BÖWE *One* Software Environment, the status of the mailings can be recorded in a result protocol and can form the basis for automation and increased transparency in the mailroom.

Increase in quality through additional checking at the end of the process

VEKtor allows additional quality checks at the end of the inserting process. For example, the legibility, completeness, and correct positioning of the address in the envelope's window can be checked as well as the legibility of the stamp or the existence and correct positioning of the logo printing on the envelope. Furthermore, images of the checked envelopes can be saved in a database and used for monitoring purposes at a later date.

VEKtor

- Complete integration into the BÖWE Group modules
 - Complete integration into BICOS
 - Simple integration into the BÖWE *One* Software Environment
 - Additional quality assurance at the end of the process
- **More efficiency, productivity, flexibility and transparency in the mailroom**