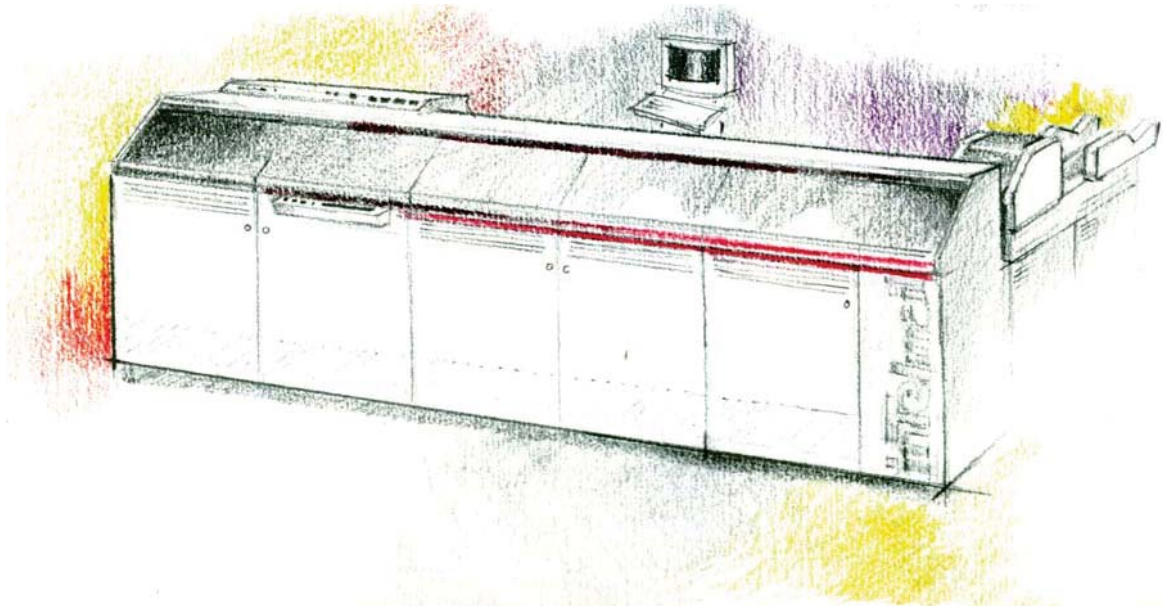


i mail C5 **SWIFT**

**The Trusted and Reliable Swing Arm Inserter,
Soars to New Heights!**



The improved wheel... SWIFT



Solutions that work!

The improved wheel.**SWIFT**

i_flex Control System

The trusted and reliable swing arm inserter has now soared to new heights!

Servo Controlled **SWIFT** Swing Arm Inserter, offers smooth and precision cycling speeds of over 12,000 envelopes per hour, with a much higher net throughput, higher flexibility, improved functionality, lower cost of ownership, and certainly... the lowest cost per piece processed.

As a stand alone inserter, the **SWIFT** includes:

Machine Control and Operation

- *i_flex* Machine Operation
- Servo Drive Control Mechanisms
- Real Time Performance Monitoring
- Error Detection and Mail_Piece Integrity
- Job Stat Reporting
- Cycling Speeds, over 12,000 envelopes per hour with Higher Net throughput
- Auto Insert Thickness Calibration and Error Detection
- Divert and /or Stop on Error
- Secure_Seal and Water Level Detection
- Dynamic Conveyor Stacker

On-Site Upgrade Path

Operation

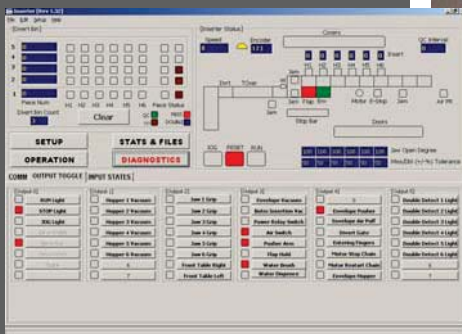
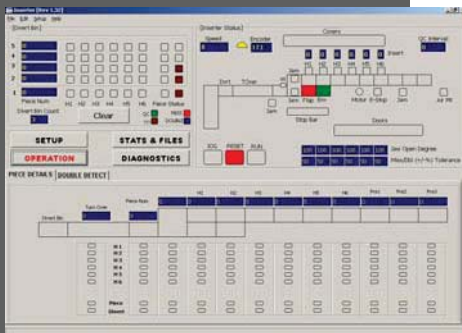
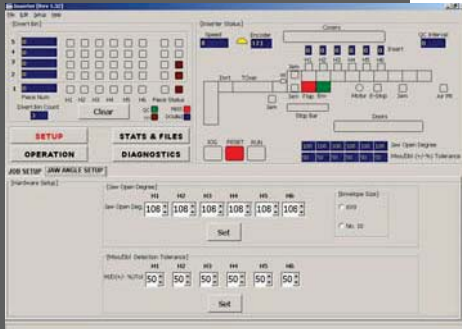
- Pneumatic Controls for Precision Swing Arm Operation
- Configurable missed Insert / Envelope Redraw
- Envelope Turnover

Intelligent Functionality

- Primary Document Reading from Insert Hopper
- Selective Inserting
- BCR / CAMERA Insert Matching from Hoppers
- Insert Stock Verification
- Mail_Piece Divert Control/Selective or on Error

Fully Featured Intelligence

- System Operating Software
- Integration of one or more Intelligent [Feeder/Accumulator/Folder] Security Document Input Channel with OMR/BCR/OCR Reading Capabilities
- File Based Operation
- Intelligent Matched On-Line Ink Jet Printing/Digital Metering
- Exit Envelope Scanning, Recording and Integrity Management Solutions



Specifications

- Chain Link:** 10"
- Speed:** 12,000 cycles/hour
- Envelope Size:** Min 152.4 x 83.5 mm (6 x 3 1/4"), Max 241.3 x 158.7 mm (9 1/2 x 6 1/4")
Flap depth 25.4 x 58.7 mm (1 x 2 5/8 ")
- Stations:** 4, 6, 8, 10, 12 are standard
- Insert Size:** Max 229 x 152 mm (9 x 6")
Min 140 x 76 mm (5 1/2 x 3")
Max individual thickness: 3mm (1/8 ")
Max accumulated thickness: 8mm (5/16 ")
- Power:** 220-240 Volts (Single phase), 20 Amps

Visit our website or contact us directly
IM Connect Pty. Ltd.
 16/B Mars Road
 Lane Cove, NSW 2066
 Tel +61 2 9427 6700
 Fax +61 2 9418 7798
www.imconnect.com.au
systems@imconnect.com.au



Do More, Spend Less